

Our team


Head of Department
Support for Students with Special Needs
Digitisation Centre
Counselling Services, Student Societies
Support for Socio-economically Disadvantaged Students

Head of Department


	<p>Mgr. Šárka Vohlídalová phone: 224 491 896, 778 750 048 e-mail: sarka.vohlidalova@ruk.cuni.cz</p> <ul style="list-style-type: none">• coordination of the activities of the centre; methodological and conceptual activity
---	--

Support for Students with Special Needs


Loan of aids service:

	<p>Mgr. Jana Vlasáková phone: 224 491 604 e-mail: jana.vlasakova@ruk.cuni.cz</p> <ul style="list-style-type: none">• administration of student and applicant databases; student records• seminars and training courses for applicants, students and CU staff• counselling
---	--

Administration of centralised services – Diagnostic interviews

	<p>Mgr. Denisa Neumannová e-mail: denisa.neumannova@ruk.cuni.cz</p>
---	---

Coordinator of services for students with visual impairments (category A)

	<p>PhDr. Lenka Dobešová, Ph.D. phone: 224 491 507, 777 355 728 e-mail: lenka.dobesova@ruk.cuni.cz</p> <ul style="list-style-type: none">• administrator of digitisation centre and reading room for students with special needs• digitisation of study resources• practical training for using adaptive equipments and technologies• training of spatial orientation skills and independent movement services
---	---

Coordinator of services for students with hearing impairments (category B)



Mgr. Kateřina Holubová
e-mail: katerina.holubova@ff.cuni.cz
address: FF UK, náměstí Jana Palacha 2, Praha 1 (4th floor, room n. 421)

- study skills coaching
- Provider of diagnostic interviews
- counselling

Coordinator of services for students with physical impairments (category C)



Mgr. Simona Kostelanská, DiS.
phone.: 224 491 816
e-mail: simona.kostelanska@ruk.cuni.cz

- coordinator of services for students with physical disabilities
- mapping accessibility of buildings
- counseling for outgoing and incoming students with special needs
- counselling

Coordinator of services for students with learning difficulties and students with autistic spectrum disorder (category D, E)



Veronika Kubíková
phone: 224 491 899, 778 978 631
e-mail: veronika.kubikova@ruk.cuni.cz

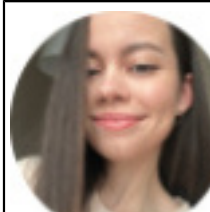
- counselling
- coordinator of Assistance during studies

Coordinator of services for students with psychological and other problems (category F)



Mgr. Tomáš Holub
phone: 224 491 759
e-mail: tomas.holub@ruk.cuni.cz

- counselling



Mgr. Veronika Sláviková
phone: 224 491 759
e-mail: veronika.slavikova@ruk.cuni.cz


- counselling
- guarantor of Peer program



Mgr. Jolana Hošková
tel. 222 491 759

	<p>e-mail: jolana.hoskova@ruk.cuni.cz</p> <ul style="list-style-type: none">• coordinator of Peer program for students with psychological difficulties• administration of Bursary for students in acute difficulties
--	---

Support for Socio-economically Disadvantaged Students

	<p>Mgr. Zuzana Hluchánová-Horká tel. 222 491 735 e-mail: zuzana.hluchanova-horka@ruk.cuni.cz</p> <ul style="list-style-type: none">• social counselling for Socio-economically Disadvantaged Students• counselling• coordination of services student-parents
---	--